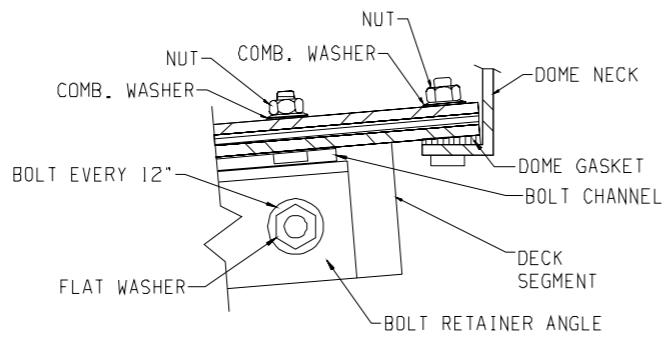


SECTION 'A'-'A'
TYP. 26' DIA. & LARGER

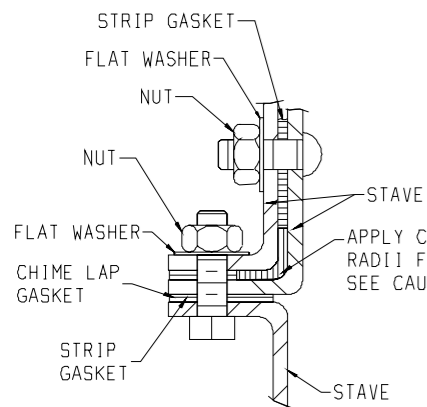


SECTION 'A'-'A'
TYP. 9' THRU 21' DIA. TANKS
W/ FLANGED DECK SHEETS

NOTE:

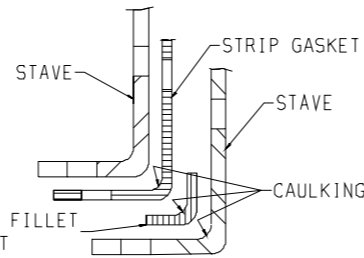
USE CHIME LAP GASKETS AT DECK SEAM LAPS AT CENTER DOME. APPLY CAULKING AS IN SECTION 'L'-'L'. DOME GASKETS ARE SUPPLIED IN 1 PC. OR MULTIPLE PC. SETS. LAP EACH END HOLE OF EACH PC TO FORM A CIRCLE. CAULK BOTH ENDS TO ASSURE A PROPER SEAL.

NOTE: ON 18" Ø TANKS PUT BOLT CHANNEL AT OUTER PORTION OF TANK. ONE HL IN VERT. SEAM AT DOME WILL NOT HAVE BOLT CHANNEL.

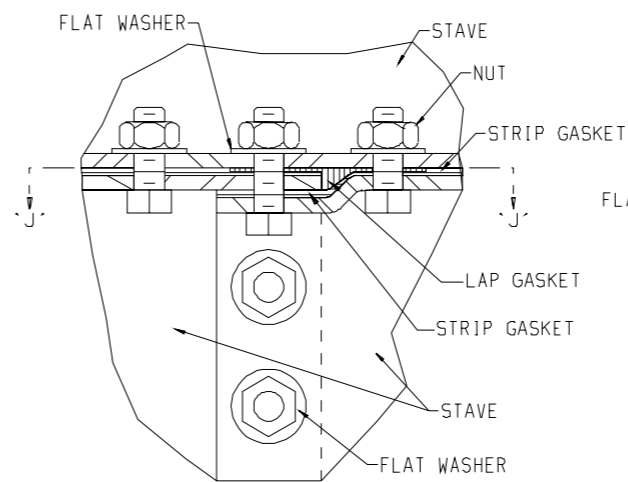


SECTION 'B'-'B'

APPLY CAULKING TO RADII FILLET GASKET SEE CAULKING DETAIL

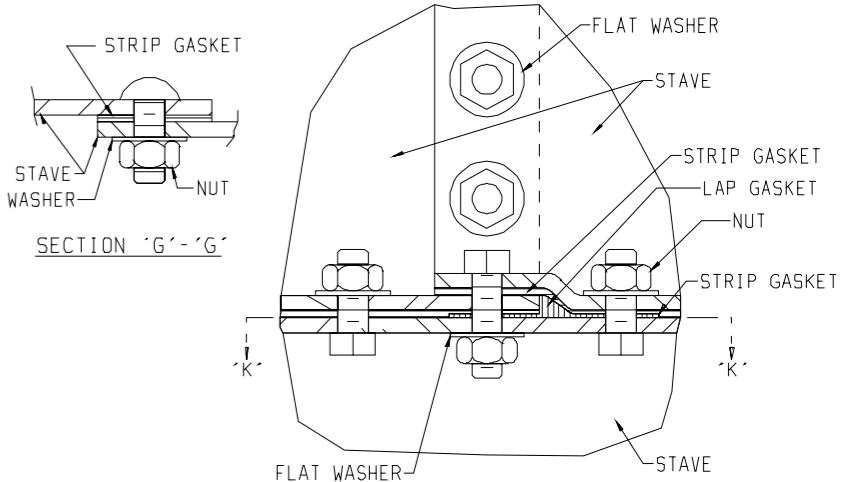


CAULKING DETAIL
TYP. ALL STAVE CORNERS



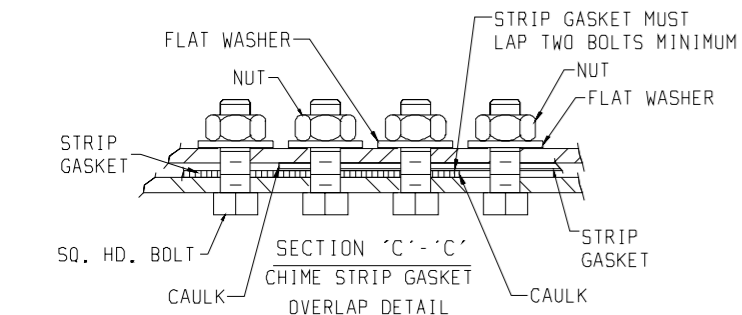
DETAIL 'F'

CAULK ALONG THE BUMP OF THE CHIME LAP GASKET BOTTOM SIDE.



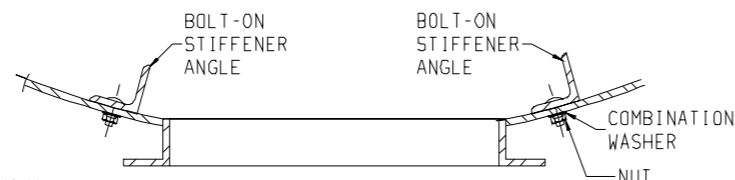
DETAIL 'H'

CAULK ALONG THE BUMP OF THE CHIME LAP GASKET



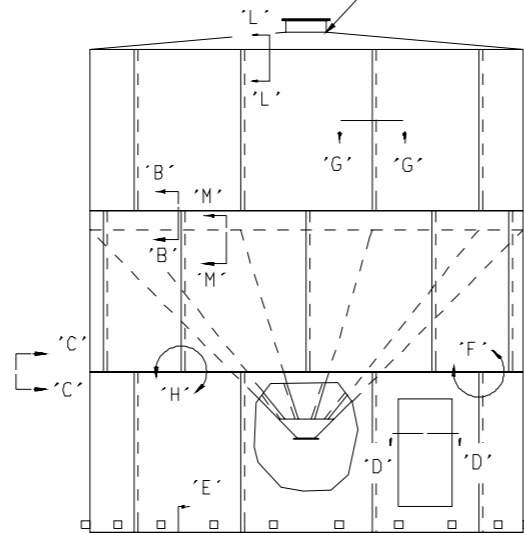
SECTION 'C'-'C'
CHIME STRIP GASKET
OVERLAP DETAIL

STRIP GASKET MUST LAP TWO BOLTS MINIMUM



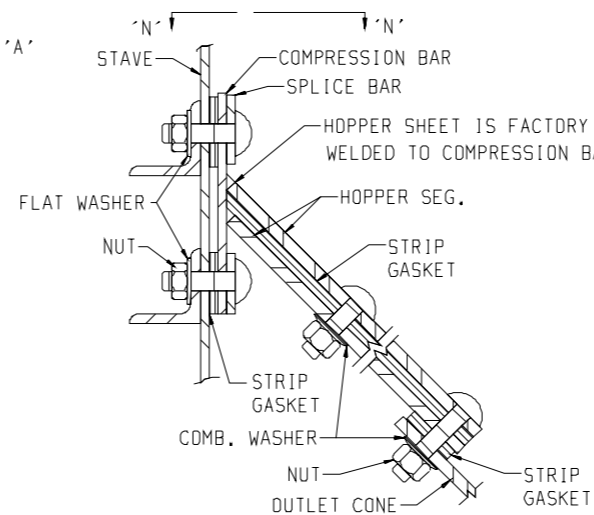
SECTION 'D'-'D'
WHEN REQUIRED

SEE SECTION 'A'-'A'



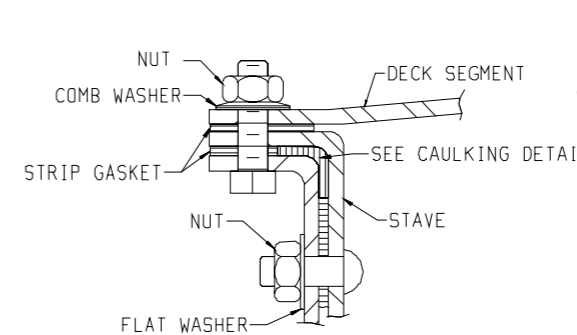
TANK ELEVATION

PLASTIC CAP NOTE: WHEN PLASTIC CAP BOLTS ARE REQUIRED USE PLASTIC CAP BOLTS IN VERT. SEAM ABOVE HOPPER & HOPPER ATTACHMENT RING VERT. SEAMS.

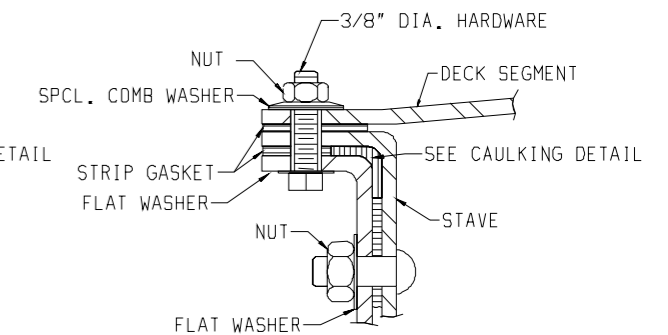


SECTION 'M'-'M'

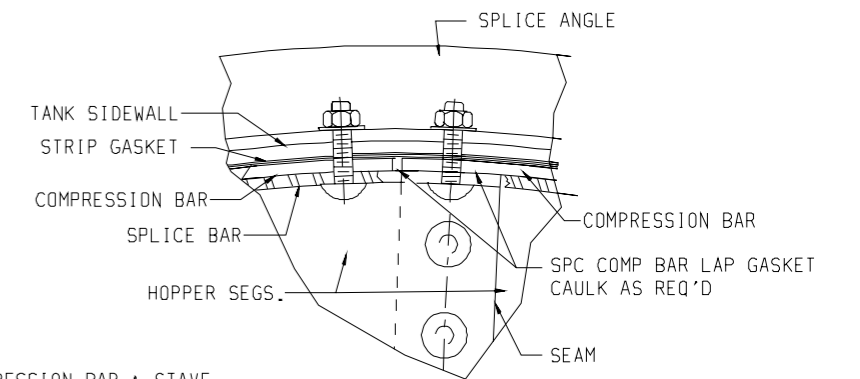
CAULKING NOTE: CAULK BETWEEN COMPRESSION BAR & STAVE. CAULK BETWEEN ALL HOPPER SEAMS. AFTER TIGHTENING REMOVE ALL EXCESS CAULKING FROM INT. OF HOPPER.



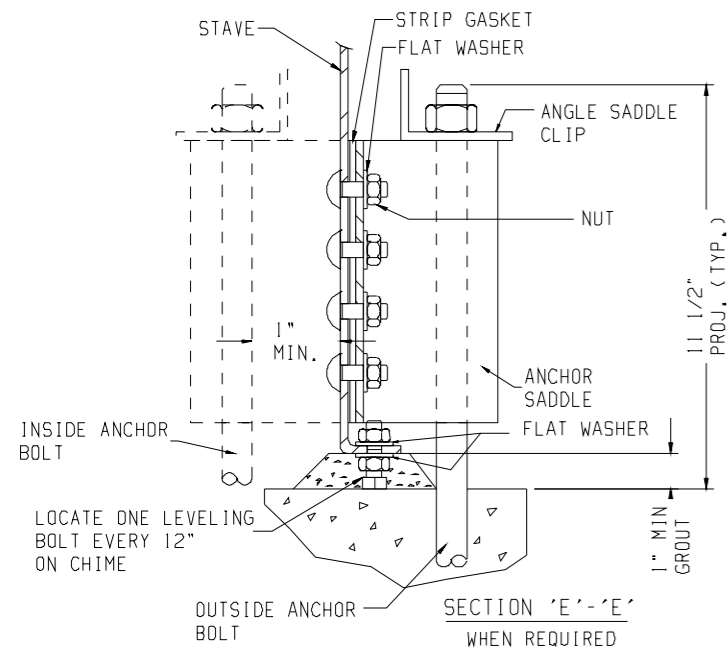
SECTION 'L'-'L'



SECTION 'L'-'L'
PRESSURE RELIEF DECK



VIEW 'N'-'N'
ROTATED

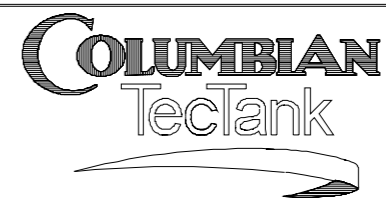


SECTION 'E'-'E'
WHEN REQUIRED

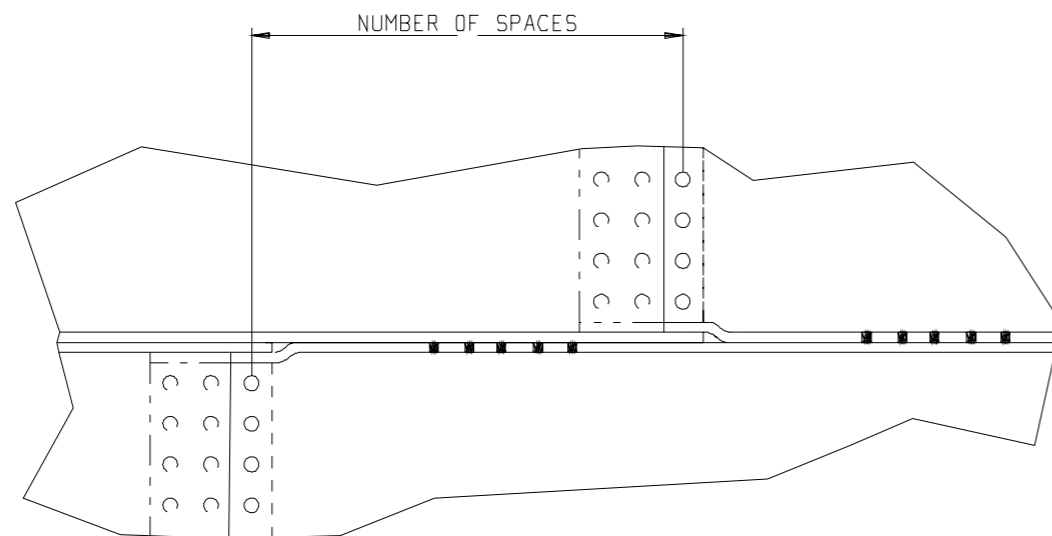
LOCATE ONE LEVELING BOLT EVERY 12" ON CHIME

CONFIDENTIAL
THIS DRAWING IS THE PROPRIETARY PROPERTY OF COLUMBIAN TECTANK AND SHALL NOT BE USED NOR REPRODUCED WITHOUT THE EXPRESS WRITTEN CONSENT OF THE CORPORATION.

M						SCALE	NTS
L						DRN.	LG 4/13/77
K						CHK.	JAF 4/13/77
J	REV	TITLE BLOCK	HACK	NS	KM	APP.	KM 4/13/77
			BY	CHK.	APP.	DATE	



STANDARD DETAILS FOR INDUSTRIAL TANKS	
REL. NO.	B
	50-00-0000-53



TYPICAL CHIME SPACE DETAIL
TYPICAL FOR 1, 2 & 3 ROWS VERTICAL

FOR SPECIAL GRADE MATERIAL
CHIMES TOP & BOTTOM WILL BE
NOTCHED AS FOLLOWED.
GRADE 50 - 1 NOTCH
GRADE 55 - 2 NOTCHES
GRADE 60 - 3 NOTCHES
GRADE 65 - 4 NOTCHES
GRADE 70 - 5 NOTCHES

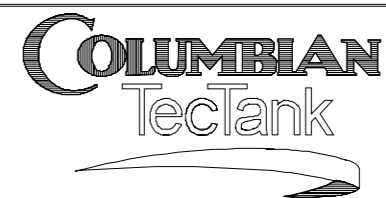
BOLT SCHEDULE	SQ. HEAD BOLTS		FINNECK BOLTS	
	1/2" X 1/4" LG.	1/2" X 1/2" LG.	1/2" X 3/4" LG.	1/2" X 2" LG.
BOTTOM STAVE RING LEVELING BOLTS				X
ANCHOR BOLT SADDLE TO STAVE				X
VERTICAL SEAM 14GA THRU 9GA				X
VERTICAL SEAM 8GA THRU 1/4PL				X
VERTICAL SEAM 5/16PL				X
* CHIME 14GA THRU 9GA	X			
* CHIME 8GA THRU 1/4PL	X	X		
* CHIME 5/16PL	X	X		
* CHIME AT LAP 14GA THRU 9GA	X			
* CHIME AT LAP 8GA THRU 1/4PL	X	X		
* CHIME AT LAP 5/16PL	X	X		
DECK SUPPORT CHANNEL TO CENTER COL.	X			
DECK SUPPORT CHANNEL TO SUPPORT CLIP	X			
DOME TO CENTER COLUMN ANGLES				X
SUPPORT CLIP TO DECK CHIME	X			
DECK BOLT RETAINER TO DECK FLANGE	X			
CENTER DOME TO DECK	X			
CENTER DOME • RADIAL SEAM	X			
DECK RADIAL SEAM 14GA THRU 9GA	X			
DECK RADIAL SEAM 8GA THRU 1/4PL	X			
DECK AT LAP 14GA THRU 9GA	X			
DECK AT LAP 8GA THRU 1/4PL	X			
MANWAY FLANGE TO DECK				X
HOPPER COMPRESSION BAR TO STAVE 14GA THRU 9GA				X
HOPPER COMPRESSION BAR TO STAVE 1/4PL THRU 8GA				X
HOPPER COMPRESSION BAR TO STAVE • SPLICE PLATE AND ANGLE				X
HOPPER COMPRESSION BAR TO STAVE • SPLICE PLATE				X
HOPPER COMPRESSION TO STAVE • VERTICAL SEAM				X
HOPPER SEAM 14GA THRU 9GA				X
HOPPER SEAM 8GA THRU 1/4" PL				X
HOPPER SEAM 14GA THRU 9GA • LAP				X
HOPPER SEAM 8GA THRU 1/4" PL • LAP				X
OUTLET CONE TO HOPPER • SEAM ALL GA.'S				X
OUTLET CONE TO HOPPER BETWEEN SEAMS ALL GA.'S				X
STIFFENER ANGLE TO STAVE				X
TOP CHIME TO DECK--EXPLOSION RELIEF				X

TOP CHIME TO HAVE
COMB WASHERS IN LIEU
OF FLAT WASHERS

* NOTE:
HEAVY GAUGE CONTROLS THE
LENGTH OF BOLT WHEN
CONNECTING HEAVY TO
LIGHT GAUGE.

SPC'L 3/8" Ø X 1 1/4" HARDWARE

CONFIDENTIAL <small>THIS DRAWING IS THE PROPRIETARY PROPERTY OF COLUMBIAN TECTANK, AND SHALL NOT BE USED NOR REPRODUCED WITHOUT THE EXPRESS WRITTEN CONSENT OF THE CORPORATION.</small>	I					SCALE	NTS	
	H					DRN.	BV 2/17/92	
	G					CHK.	TT 7/25/95	
	F	REV TITLE BLOCK	HACK	NS	KM	11/1/01	APP.	KM 9/5/95
	REV.		BY	CHK.	APP.	DATE		



STANDARD DETAILS FOR INDUSTRIAL TANKS	
REL. NO.	B 50-00-0000-53